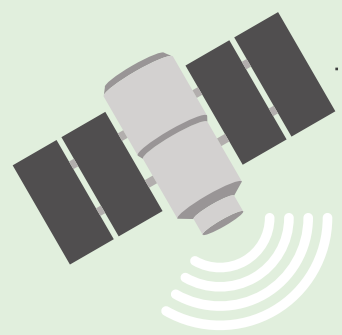


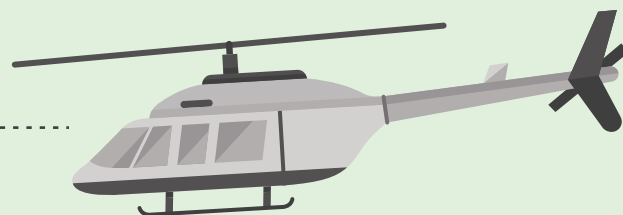
Safety

24/7/365



• Eyes in the Sky

We regularly survey all 17,000 miles of our pipeline rights-of-way. We also use satellite imagery to help identify, monitor and address any instances of incremental slope movement.



• Talking to our Neighbors

We regularly communicate with neighbours and customers about how to stay safe around our pipelines and facilities.

• Eyes on the Ground

We monitor and respond to any potential problems along our rights-of-way.



• Preventative Maintenance Dig

If our in-line inspections reveal a pipeline anomaly, we expose the pipe, examine it and make any necessary repairs. In 2018, we conducted 2,493 preventative maintenance digs across our liquids and natural gas pipeline networks.

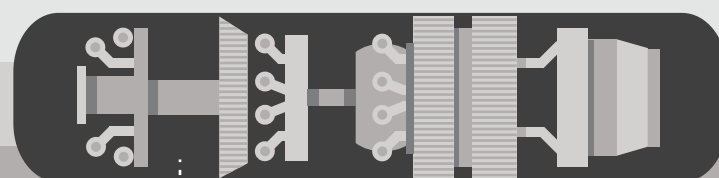


Ensuring Pipeline Integrity

Each pipeline is precisely manufactured and rigorously inspected and tested.

Routes are carefully selected to meet stringent engineering, design and environmental standards and regulations.

We carefully manage pipeline pressures and monitor temperature, pipe movement and vibration.



• In-line Inspection

Ultra-high-tech tools allow us to monitor the fitness of our pipelines from the inside out. Using imaging technologies, such as ultrasound and MRI, we scan our mainline systems, major natural gas mains and transmission lines. In 2018, we conducted 358 in-line inspections across our liquids and natural gas pipeline networks.